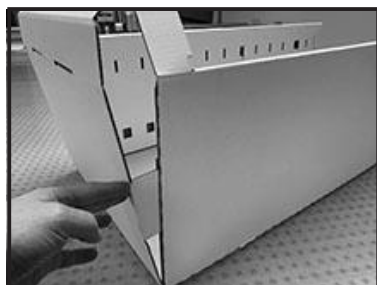
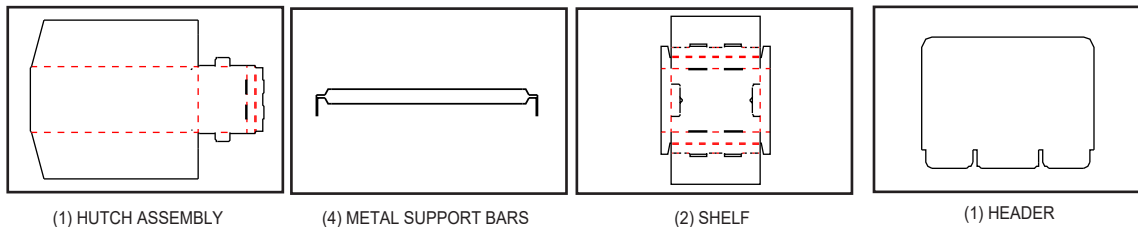


# ECM ZIP TIE CANNISTER HUTCH

2.14.20

ZX487



1. Fold the base upward and insert the tabs into the side panels on each side.



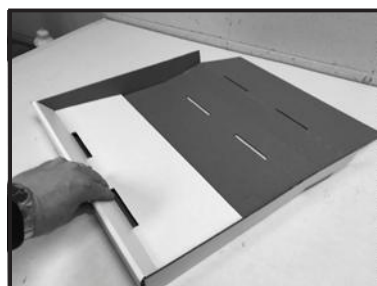
2. Roll over the base front lip, trapping the two small flaps on the left and right.



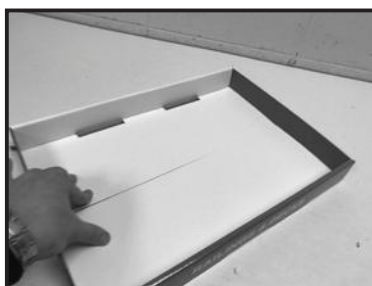
3. Insert two metal bars in the set of cut outs that are 5th counting up from the bottom.



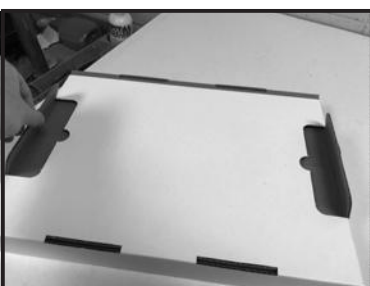
4. Insert a second set of metal bars in the set of cut outs that are 10th counting up from the bottom.



5. Fold up the sides of the shelf, Roll the back lip over trapping the small end flaps.



6. Roll over the front lip over.



7. Pop out the bottom flaps.



8. Place onto lower bar set.



9. Repeat for second shelf and place on upper bar set.



10. Fold header onto itself and weave it on the back of the display.



Completed Display